



**Manchester Library Friends' Newsletter
Labor Day Issue: September 1, 2018**

FOML Current Events Calendar

- Monday, September 3rd, Labor Day - Library Closed
- Wednesday, September 26th FOML Board Meeting, 7 pm
- Thursday, October 4th ALL LIBRARIES CLOSED
- Wednesday, October 24th FOML Board Meeting, 7 pm
- Saturday, November 3rd BOOK SALE 9 - 3 pm
- November 6th: Election Day ARE YOU REGISTERED ?
- Monday, Dec 3rd Wine Tasting & Auction 5:30-8:30 pm

And more ... check "Programs & Events" at www.KRL.org

UPCOMING MANCHESTER LIBRARY EVENTS:

Fall Storytimes: Come share stories, rhymes, songs and fun with our librarian!

Storytimes: Tuesdays 10:30 - 11: 15 am

& THIRD SATURDAYS: Sept 15, Oct 20, Nov 17 11-11:45 am

Special for Little Kids (ages 3-5):

EXPLORATION STATION

A fun, science-based program designed just for pre-schoolers. Topics and activities vary each month

Second Thursdays: Sept 13, Oct 11, Nov 8 1:30-2:30 pm

LEGO CLUB: Third Wednesdays every month

Grades K-5 5:30 - 7 pm

Use the Library's Legos to complete a challenge or construct from your imagination.

For Adults (& more next page)

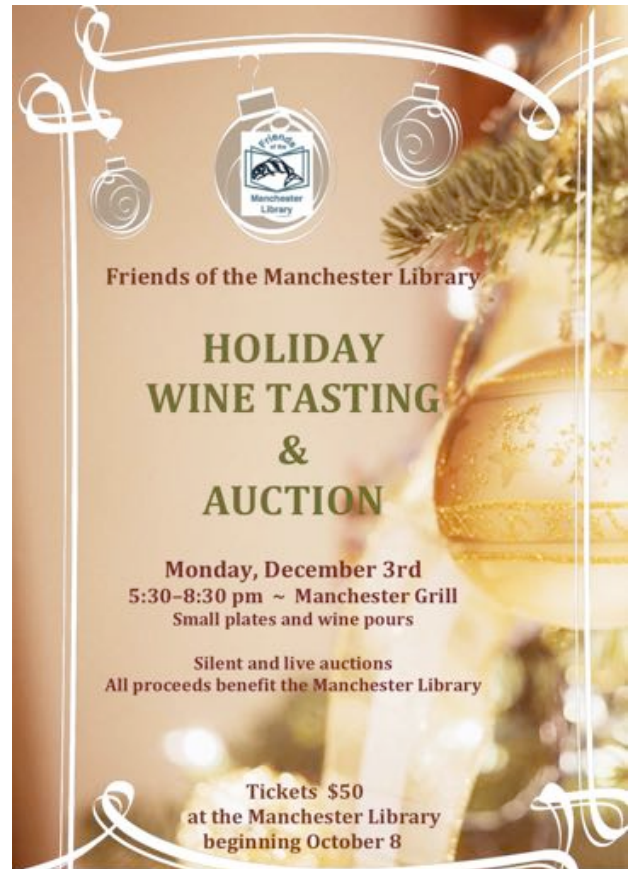
Writer's Café: Monday, Oct 1, 6 - 7:30 pm

Work on your own writing in quiet companionship. All genres, styles and levels of experience are welcome. Coffee and tea provided.

Introduction to Genealogy: Wed Sept 12th, 6-7:30 pm

A basic introduction to using Ancestry.com and other library resources to research family history and records. Registration required 360-871-3921

Advance Notice – Tickets on Sale Oct 8th



Auction Item: "Circling Salmon"



A Metis/Cree/Mohawk Native, artist Jim Stritzel (Native name 2 Bear) has called Manchester home for 40+ years. He has donated the copper sculpture titled "FOML: The Circling Salmon," which is in the Chasing & Repousse method. The sculpture honors all who have given to the Manchester Library for over 70 years. The Salmon represent the various Ancestor Friends & present Friends. The abalone eyes are the enlightenment brought by the Friends all working together and using our library. At the center of our Village is the abalone disc representing our Manchester Library as the center of our community.

LET US KNOW IF YOU HAVE AN ITEM TO DONATE

